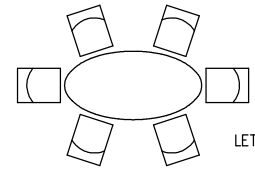


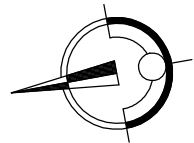
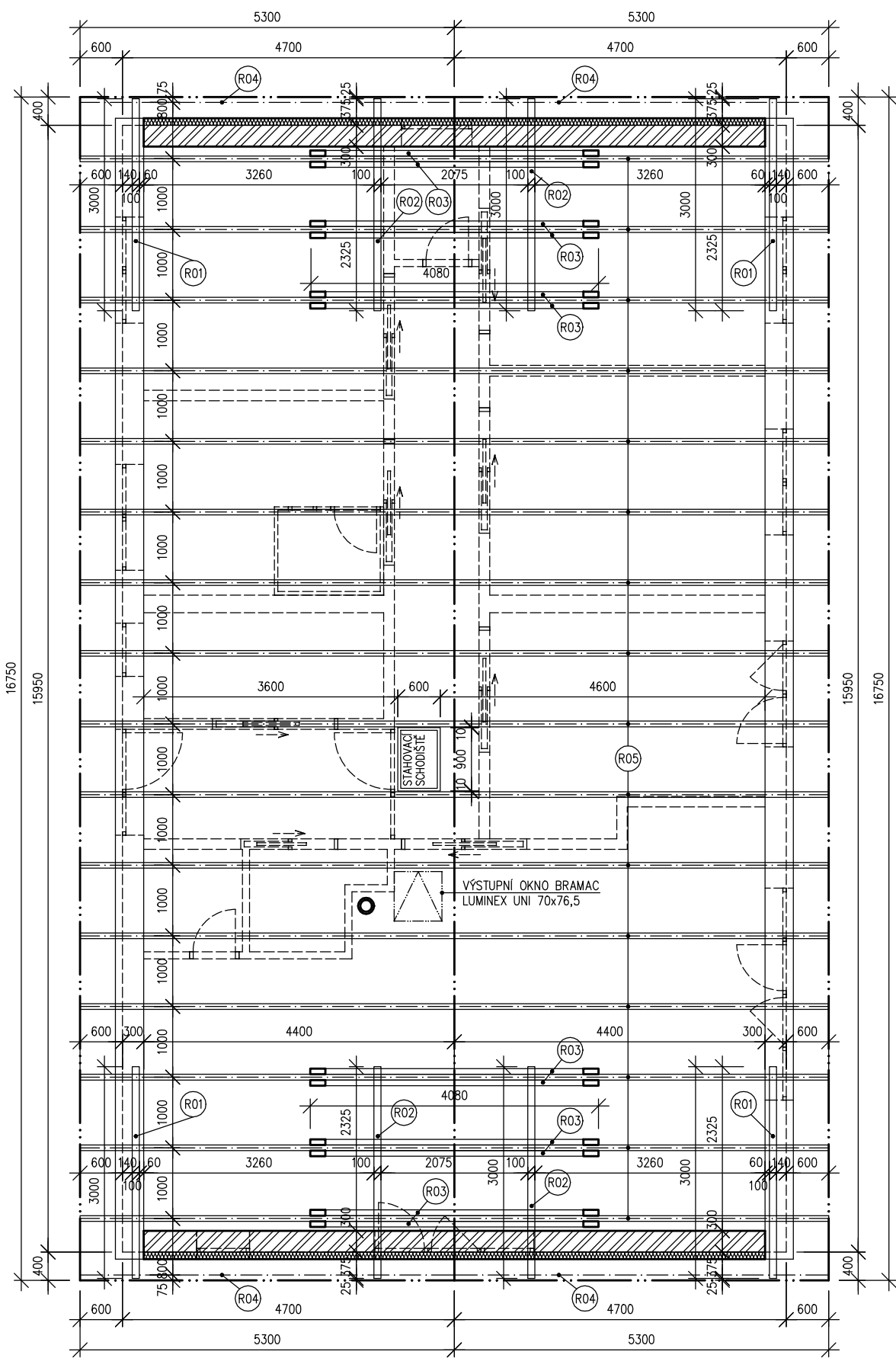
ZĚLBET. VĚNEC. 250x250mm+HEB160
4#R12+řřm. #E6. $\sigma=300$ mm
nad otvory. $\bar{\sigma}=150$ mm

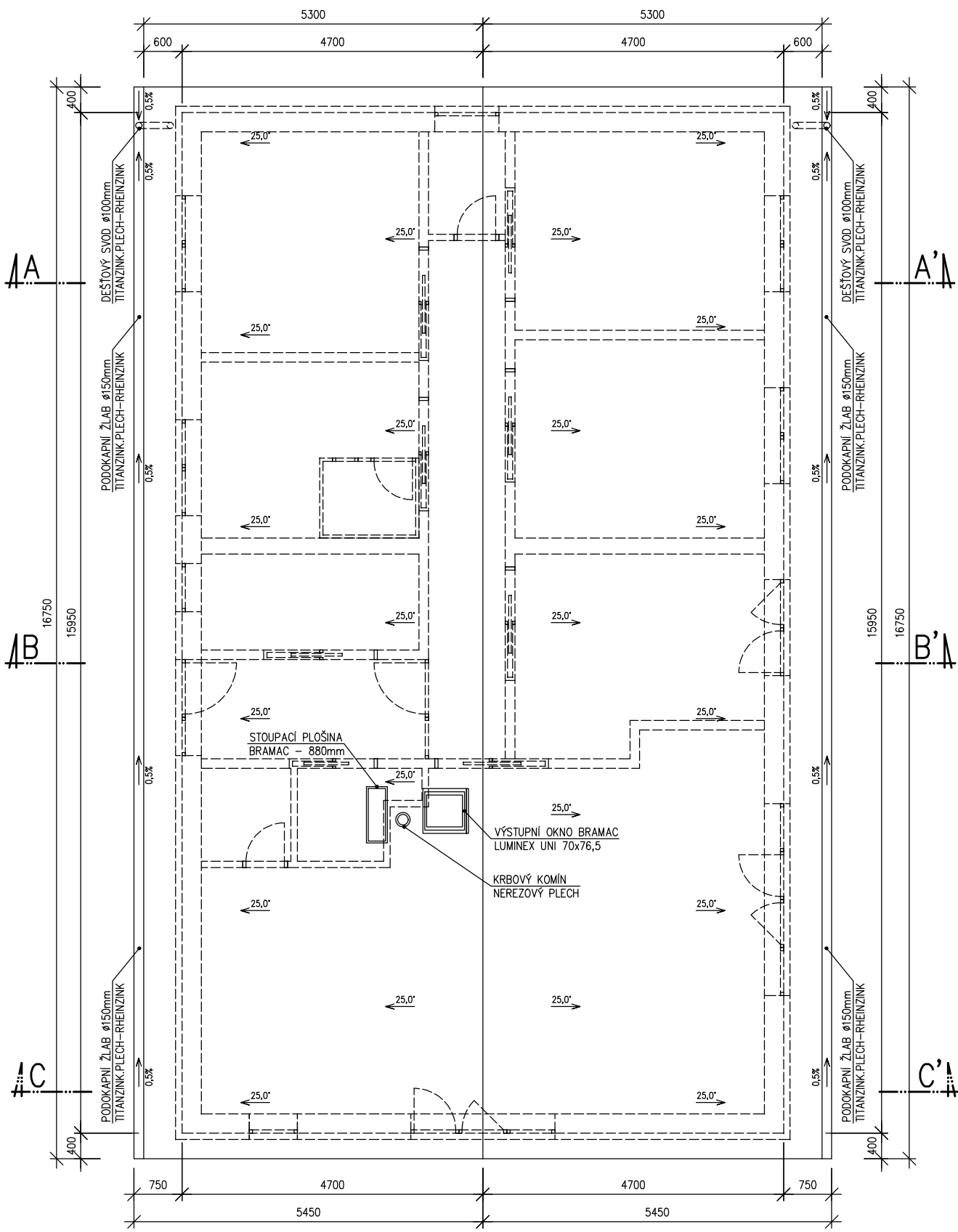
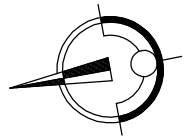
VÝPIS PŘEKLADŮ A PRVKŮ:

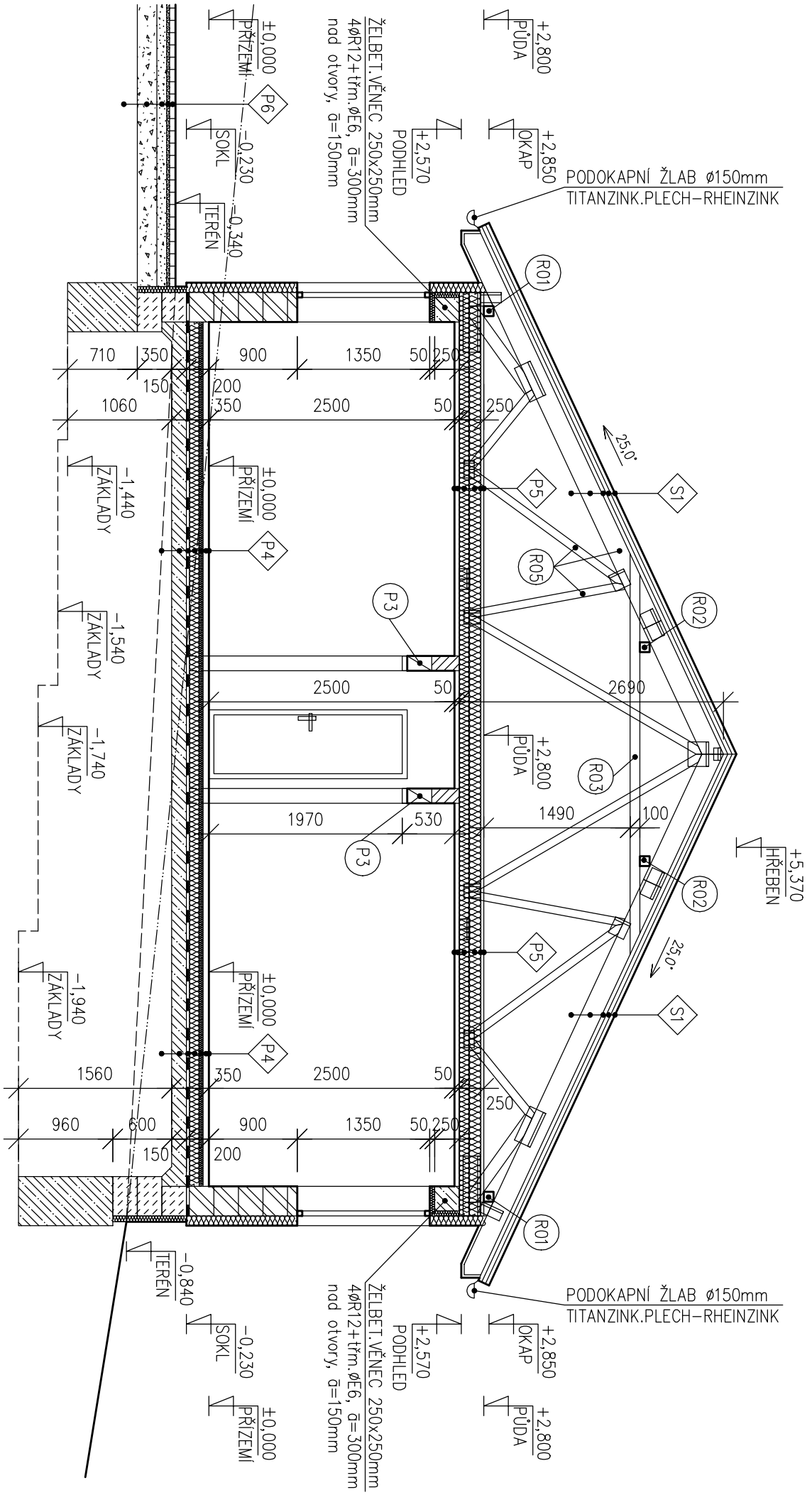
- (P1) NENOSNÝ PŘEKLAD YTONG NEP 10; dl.1250mm – 1ks (celkem 2ks)
- (P2) PLOCHÝ PŘEKLAD YTONG PSV IV/1500; dl.2000mm – 1ks (celkem 1ks)
- (P3) PLOCHÝ PŘEKLAD YTONG PSV IV/1750; dl.2250mm – 1ks (celkem 7ks)

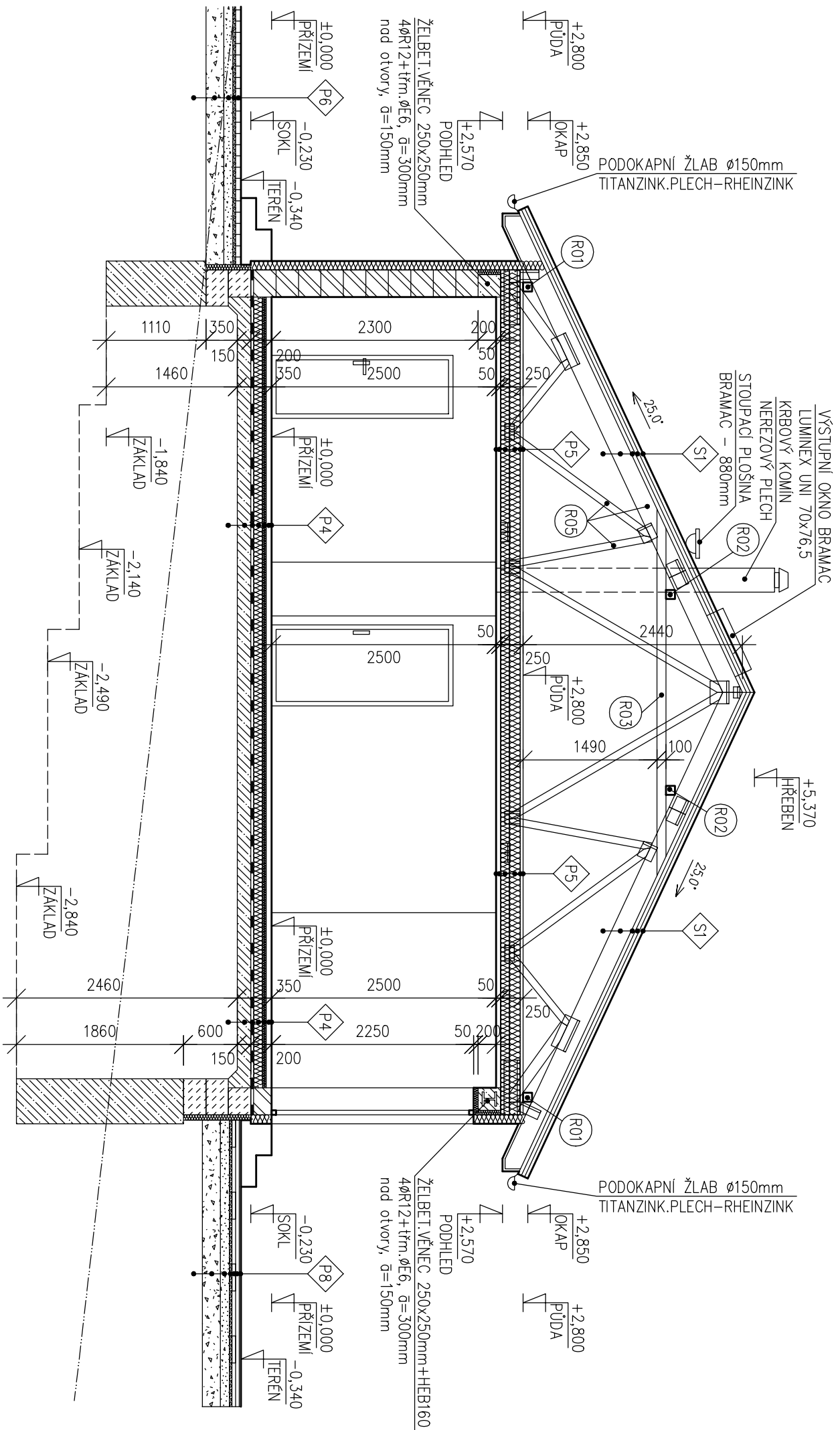


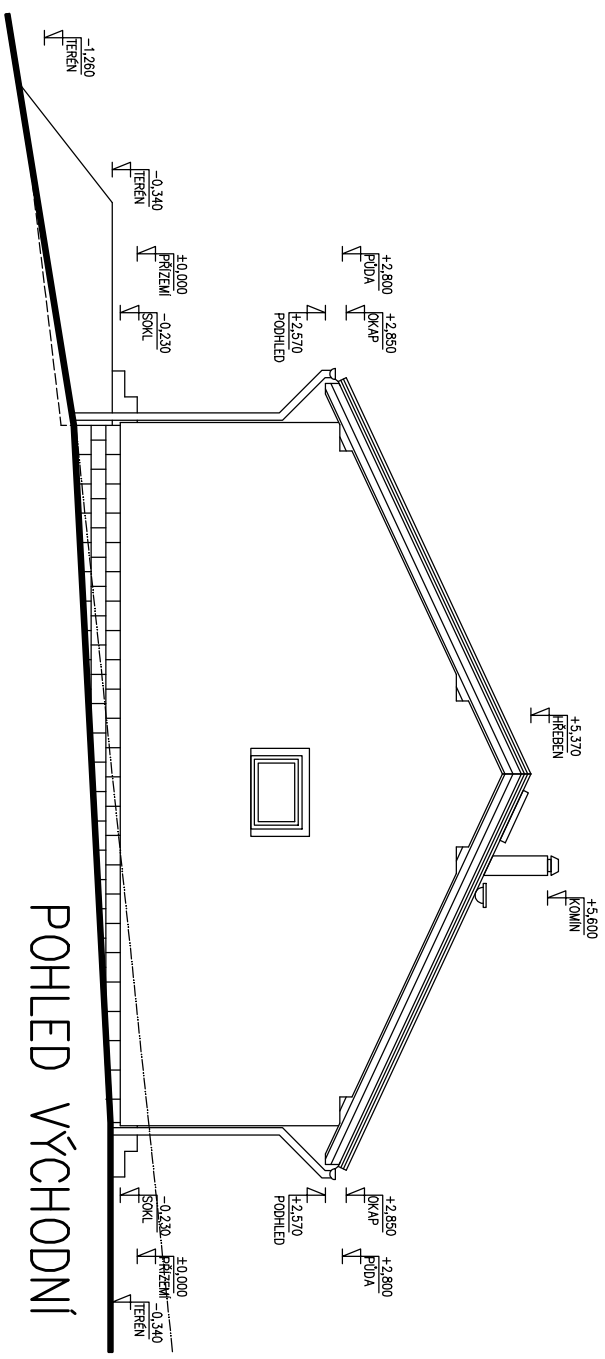
LETNÍ OTEVŘENÁ TERASA



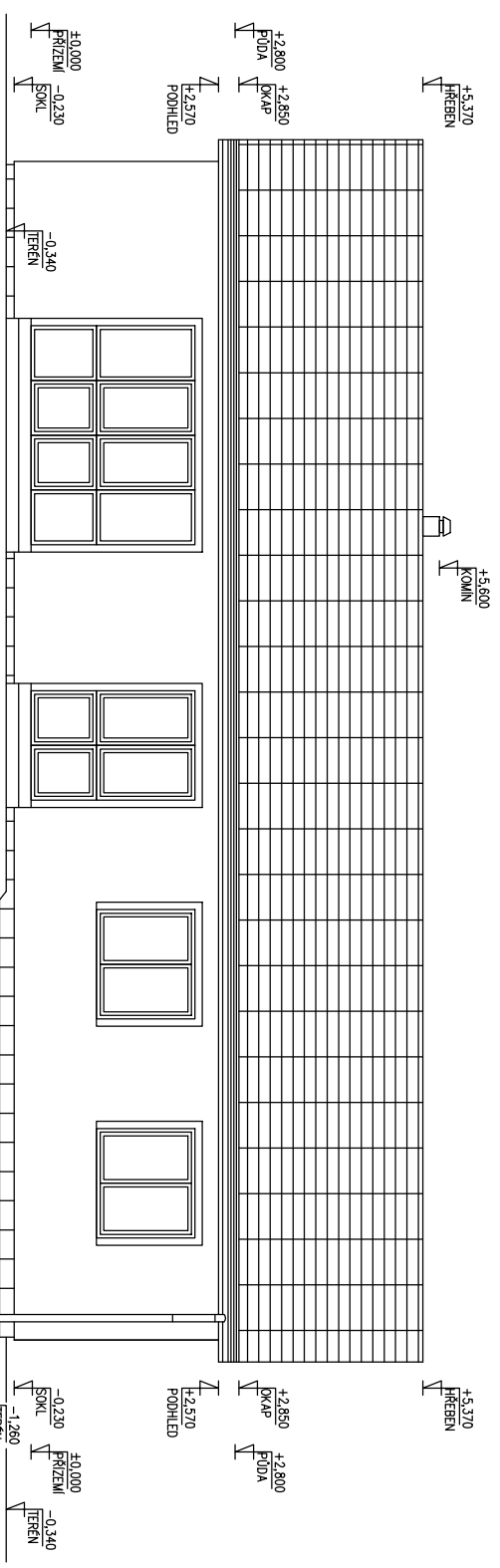






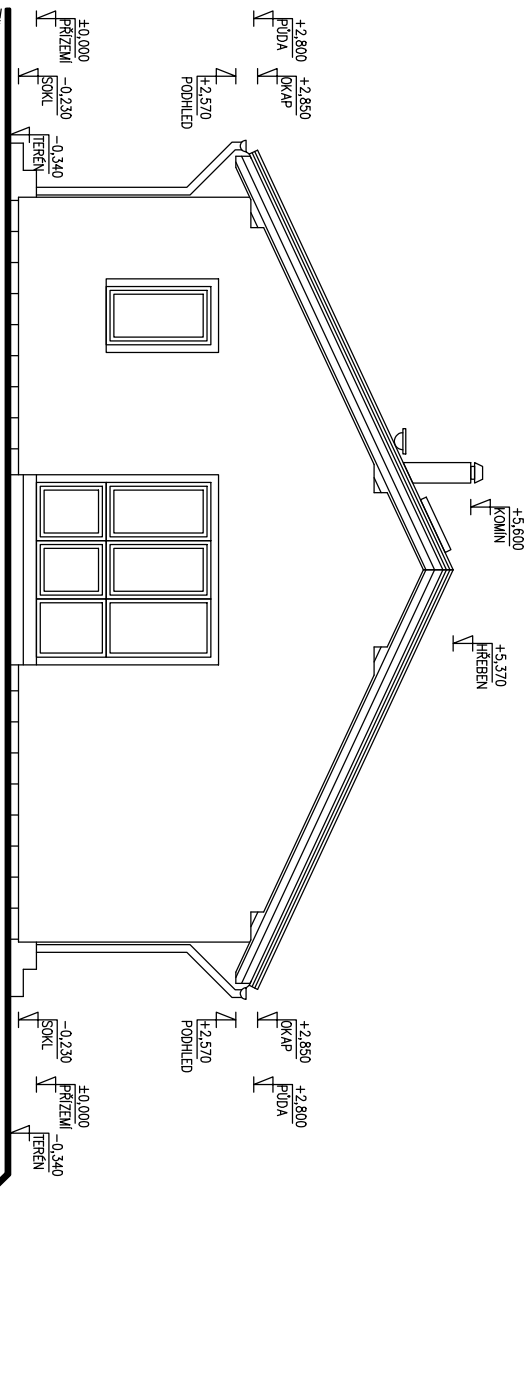


POHLED VÝCHODNÍ



POHLED JIŽNÍ

POHLED ZAPADNÍ



+5.370
HŘEBEN

+2.850
OKAP
+2.800
PRÍZEMÍ

+2.570
PODHLED

±0.000
PRÍZEMÍ
-0.230
SOKL

+5.600
KOMIN

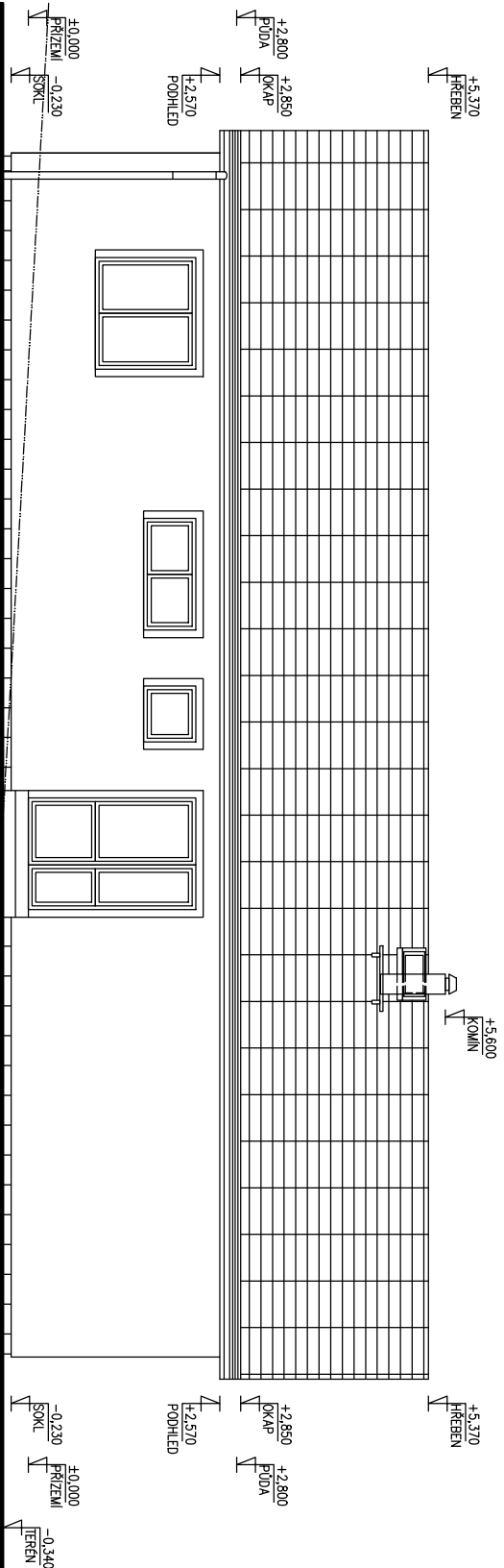
+5.370
HŘEBEN

+2.850
OKAP
+2.800
PRÍZEMÍ

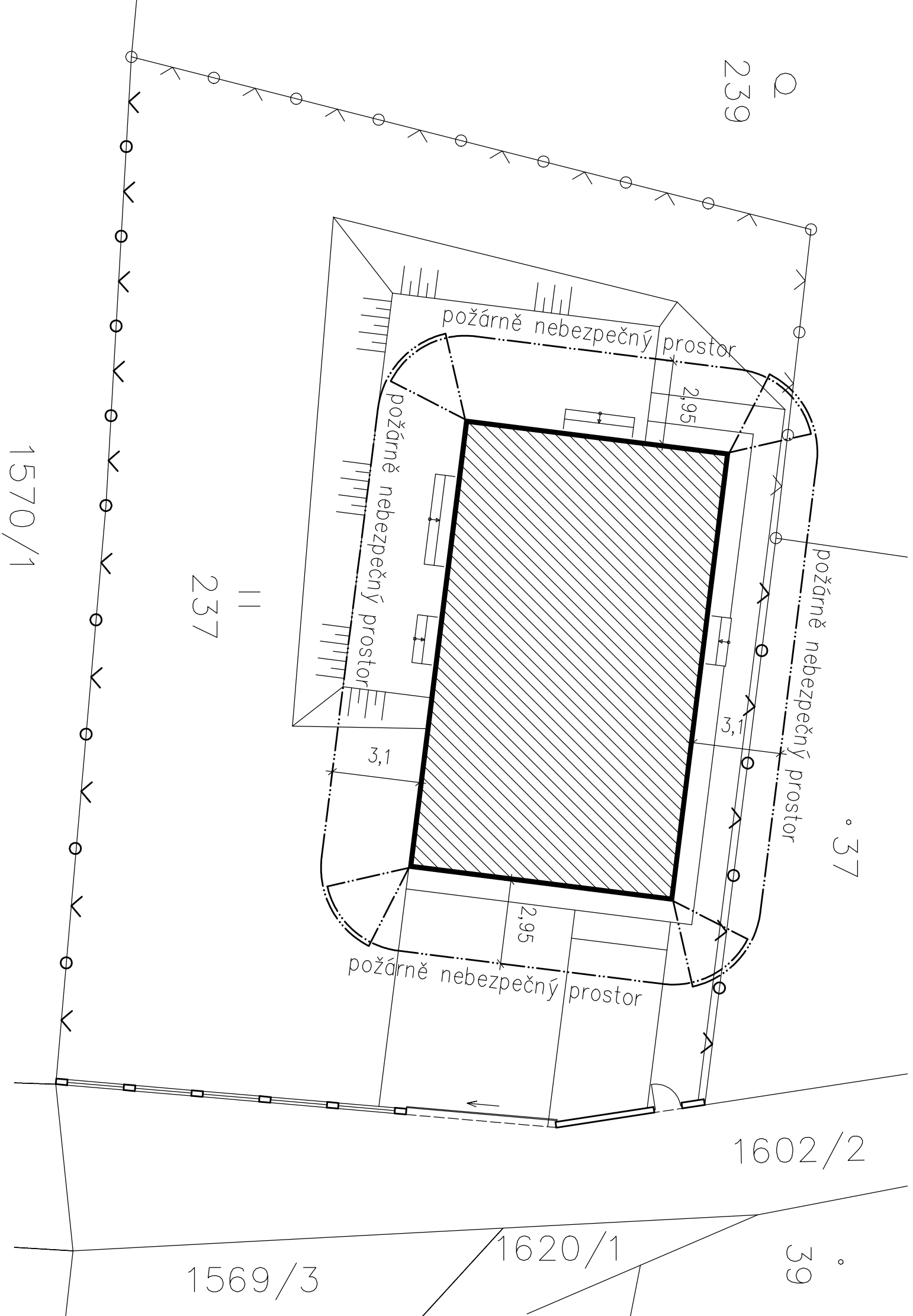
+2.570
PODHLED

±0.000
PRÍZEMÍ
-0.230
SOKL
-0.340
TERÉN

POHLED SEVERNÍ







239

1570/1

237

požárně nebezpečný prostor
37

1602/2

1620/1

1569/3

39

